

# Programming a replacement Power Module for a chair



When a PGDT R-net Power Module (for example a PM80 or a PM120) shall be replaced with a spare part, the spare part needs to be programmed with a

- complete set of parameter settings
- and
- correct personality settings (for the OBP)

This is possible to do with a Dealer R-net PC-Programmer as described below. The PM must of course be connected to a powered system and switched on. The dongle (programming key) must be connected to the Rnet system and the PC.

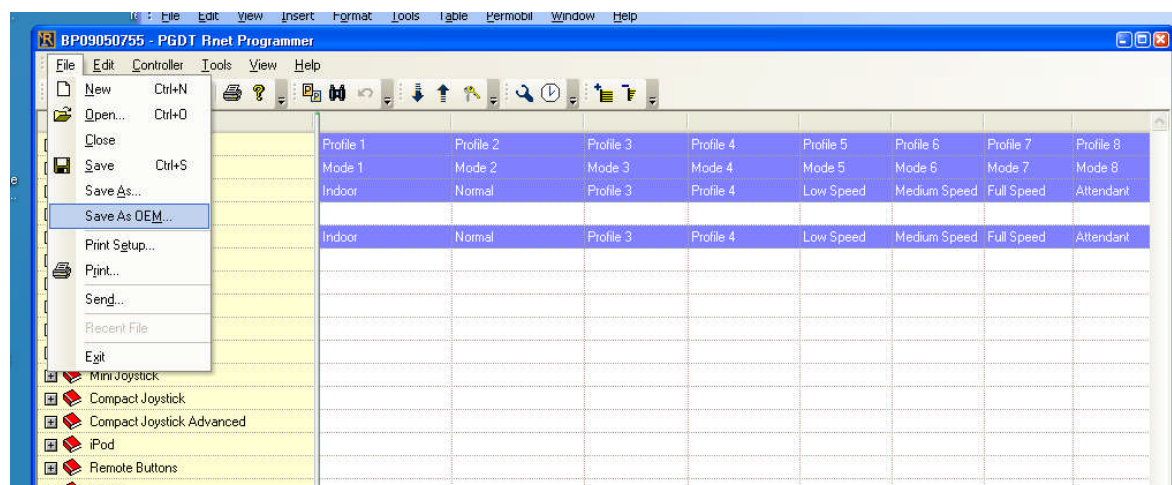
## Programming of Parameters

One of the following methods A-C can be used

### A: Copying the settings from the old PM (*Recommended whenever possible*)

This method will also make copy the current Preset data to the new PM, 'Reset to Preset' will work also on the new PM. The current setting of the old system will be copied so it will work as before the change of PM.

- Make a complete back-up of all parameters from old PM:
  - Click on 'Controller' – 'Read from Controller'
  - Click on 'File' – 'Save As OEM' and save the file on your PC.*Caution: Don't use 'File' – 'Save' since it only saves Dealer accessible parameters)*



- Replace the old PM with the new PM (the spare part)
- Click on 'Controller' – 'Write to Controller'

Ready

### B: Programming the spare part using the Factory Backup file

This method will not update the Preset data in the new PM and 'Reset to Preset' will not work properly on the new PM. Also any changes in the settings done to the chair after delivery from factory will be lost.

Refer to the Instruction sheet **“How to find Back-up files for a wheelchair”**

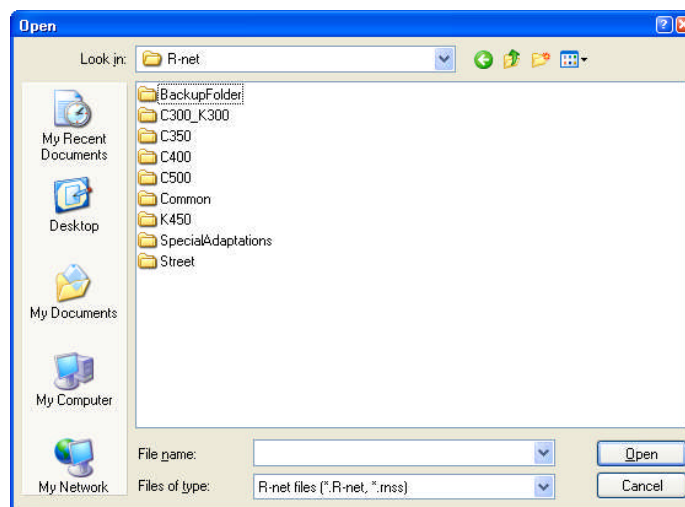
## C: Using the subset files for the actual configuration

This method will not update the Preset data in the new PM and 'Reset to Preset' will not work properly on the new PM). Also any changes in the settings done to the chair after delivery from factory will be lost.

Warning: Shall only be done by persons trained and with good knowledge about R-net programming and Permobil products.

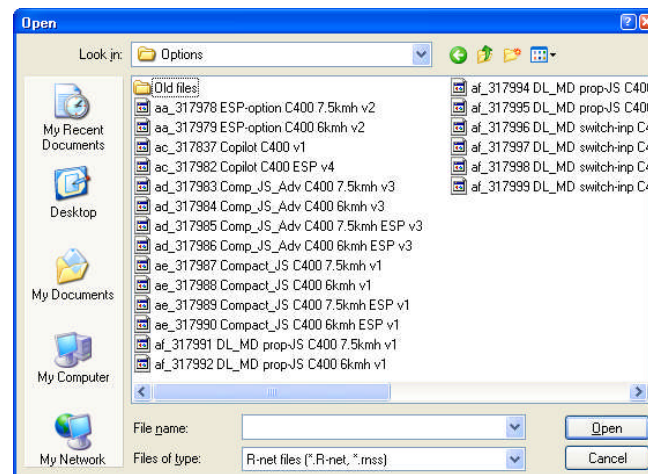
It is assumed that the R-net Dealer Permobil PC-programmer and the R-net Config-files are installed on the PC.

- Start R-net Dealer Permobil PC-programmer
- Click on 'Open' and a window like this should be seen



If not go to C:\Program Files\Permobil\R-net

- Select folder for the actual the type of chair, type of seat and the files for the actual chair/base version.
- If the chair is provided with any alternative drive or other R-net option, go to options for the actual chair type. Select files for the actual options. See example:

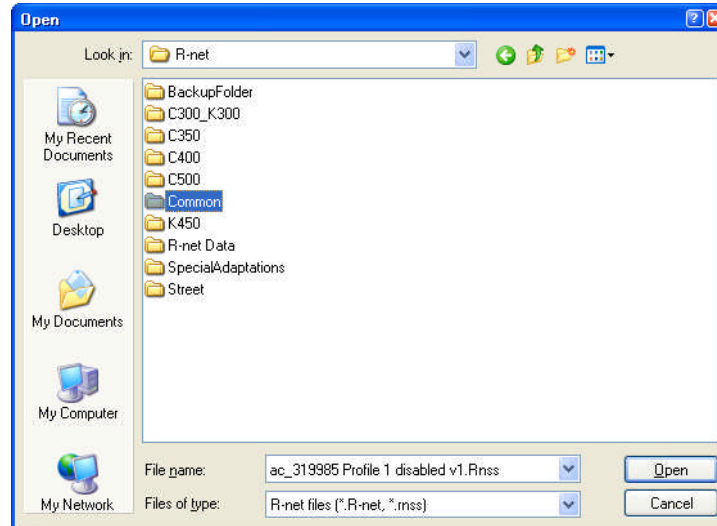


# Programming a replacement Power Module for a chair

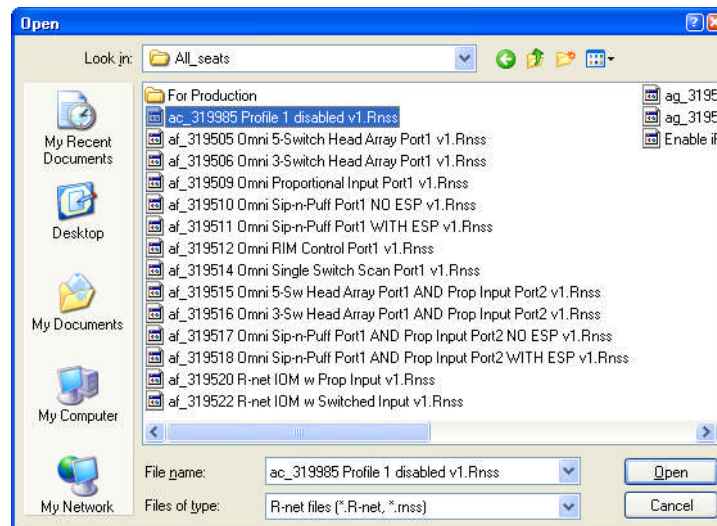


Note: If more than one optional file is required be sure to download them in the correct alphabetic order based on the initial letters of the file name.

- In some cases a subset file from the COMMON –folder shall also be downloaded.



for example if the chair has a JSM\_LED display. Then should the subset file *'ac\_319985 Profile 1 disabled'* in the 'Common' – 'All\_Seats' - folder be downloaded in order to get 5 speed steps.



## Changing OBP-menu (Controller Personality)

(OBP = On Board Programming, that is programming R-net via JSM)

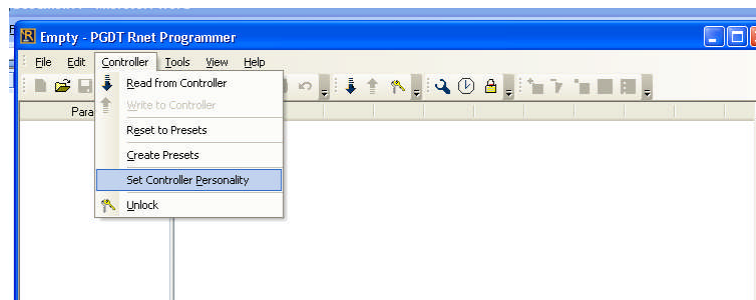
(OBP menu = what and how it is presented on the JSM display when using OBP. This is called controller personality in the R-net Programmer)

### Selection of OBP-menu

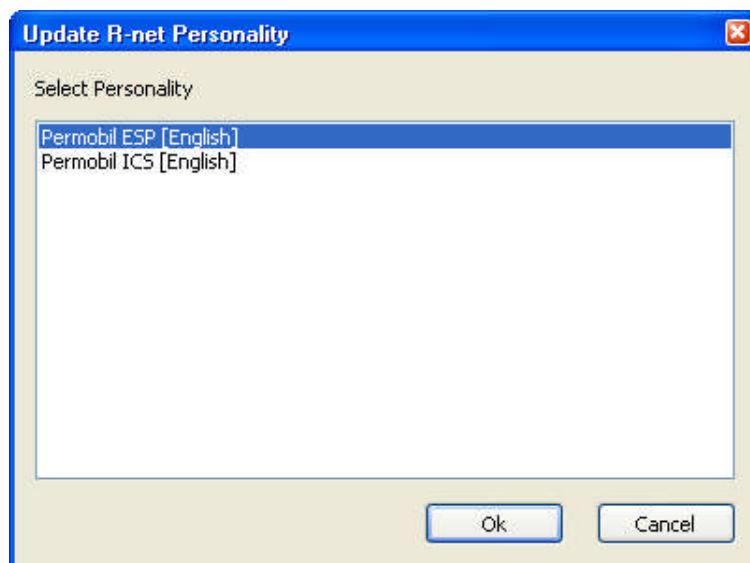
The correct OBP-menu (Personality) has to be programmed.

Selectable are OBP-menus (Personality) with and without ESP. Selecting one including 'ESP' in the name makes the ESP speed parameters s accessible via OPB (substituting the normal speed parameters).

Open the PC-programmer and connect the dongle+ cable to PC and R-net  
Click on 'Controller' – 'Set Controller Personality',.



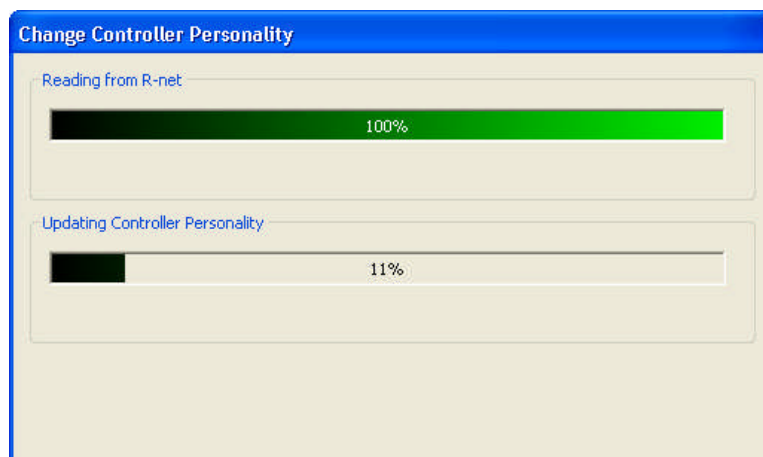
Something like this will be shown



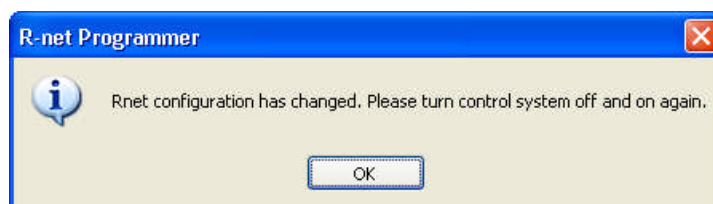
select Personality and click OK

Select one including *ESP* in the name if the chair is provided with ESP.

Programming will start. A window as below will be opened.



When ready:



**Checking** is performed by pressing twice on the Mode button on the JSM. When the OBP menu is shown shall '*Speeds with ESP*' be readable on first line if '*ESP*' was selected, otherwise shall '*Speeds*' be shown.