

Changing OBP-menu (Controller Personality)

(OBP = On Board Programming, that is programming R-net via JSM)

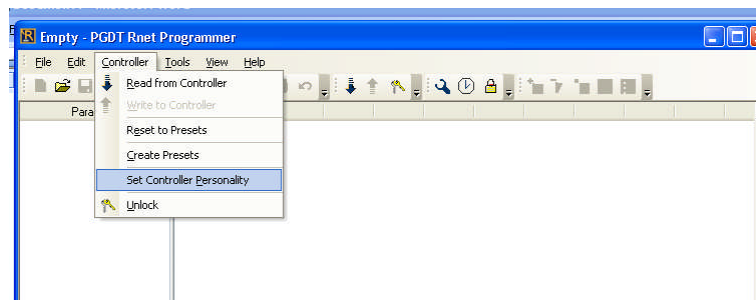
(OBP menu = what and how it is presented on the JSM display when using OBP. This is called controller personality in the R-net Programmer)

Selection of OBP-menu

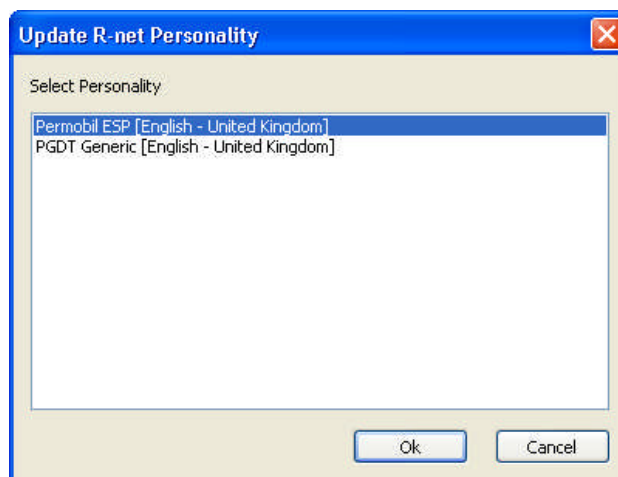
The correct OBP-menu (Personality) has to be programmed.

Selectable are OBP-menus (Personality) with and without ESP. Selecting one including 'ESP' in the name makes the ESP speed parameters s accessible via OPB (substituting the normal speed parameters).

Open the PC-programmer and connect the dongle+ cable to PC and R-net
Click on 'Controller' – 'Set Controller Personality',.



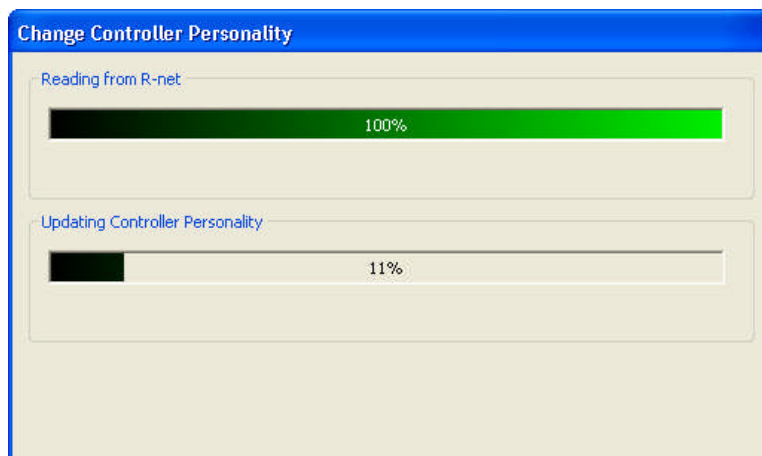
Something like this will be shown



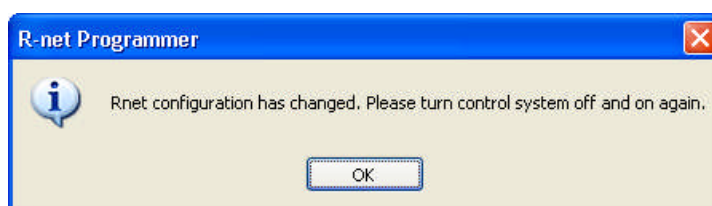
select Personality and click OK

Select one including *ESP* in the name if the chair is provided with ESP.

Programming will start. A window as below will be opened.



When ready:



Checking is performed by pressing twice on the Mode button on the JSM. When the OBP menu is shown shall '*Speeds with ESP*' be readable on first line if '*ESP*' was selected, otherwise shall '*Speeds*' be shown.